

The Mod Series® – Arc Mod®



Cushiony and cozy, the high density foam provides a welcome soft-seating change from traditional chairs.

Pair Mod® with café tables, Mod® tables, or 30" Round Mod® with laminate top.

Available in six Momentum Textiles grade choices, including pen-resistant, water resistant, and antibacterial options.

Various shapes, different height options, and limitless configurations.

The Mod Series® STYLES



8717 - Arc 4 Mod® with Backrest

+



8708 - Mega 4 Mod®

=



Create a 2nd side on a "couch"
(8717 & 8708 - Arc 4 Mod® Combo)



8717-SHELF - Arc 4 Mod® with Backrest & Shelf

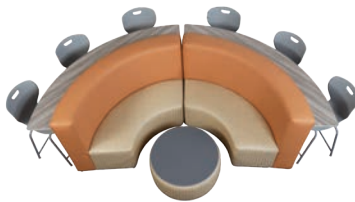
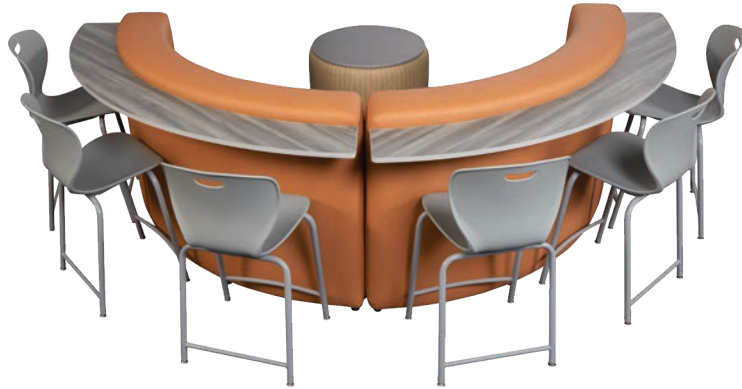


8718 - Arc 4 Mod® with CF-30R - Café Table



8728 - Arc 6 Mod® with 80205Q - Mod® Table

The Mod Series® – Arc Mod®



8717-SHELF - Arc 4 Mod® with Backrest & Shelf & 8138-LAM - 30" Round Mod® with Laminate Top (Shown with Z424G - 24" Zed Café Stools)

SEATING

Seat: Polyurethane foam surrounds a 3/4" plywood frame supported by multiple 1 x 2 wooden pegs

Textiles: 6 Different Grade Options

Casters/Glides: Compatible with 1 1/2" Twin Wheel Casters and Stationary Glides. See pages 32-33 for details.

SHELF

Top: 5/8" Thick High-Pressure Laminate

Edge Banding: PVC 3mm edge banding. Standard Black, White or Gray Edge, Custom Colors available.

MOD® TABLE

Tabletop: High Pressure Laminate

8020SQ Square Mod® Table: 22 x 22" Top

Edge Banding: PVC 3mm edge banding; Standard in White.

8030R Round Mod® Table: 30" R Top

Edge Banding: Hydraulically inserted T-mold edge banding; Color edge band available.

Frame: 1" Square 18 Gauge Welded Steel

Glides: Height Adjustable Glides



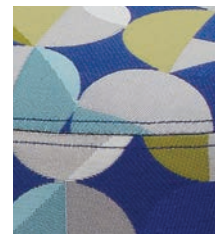
Create a Horseshoe Shape (8717 & 8708 - Arc 4 Mod® Combo)



8727 - Arc 6 Mod® with Backrest



8707 - Mega 6 Mod®



French Stitching



Glide

Caster

Optional Items: Place your School Logo on The Mod®, Stationary Glides

"The Mod Series" & "Mod" are registered trademarks of Academia Furniture Industries.

Size & Order Info
See pages 32-33

Colors, Guides,
& Accessories
See pages 142-147



For Textile Options See pages 32-33

