



Traditionally Modern

Double Desks

TOP

Work Surface: 1,152" square inches

Desktop: 1 1/8" thick high-pressure laminate

FRAME

T-Leg Frame: Black rectangular tube stretcher bar and upper legs. Chrome plated height adjustable insert legs with screw-in style, nylon base glides. See pages 110-111 for details

Activity-Leg Frame: powder coated tubular steel upper leg. Chrome plated tubular steel insert legs with self-locking screws; Legs adjust in 1" increments. See pages 100-101 for details

Glides: Self adjusting nickel-plated casing with nylon inserts

Illustration V2 Frame: Steel legs available in Fix. Ht. and Adj. Ht.

Welded Connection: Steel tube welded to steel stretcher bar

Wire Management: Available on Computer Table

Casters/Glides: Compatible with Ht. Adj. Glides (Standard) or Casters (Optional). Casters add 2-3" to the overall height.

See pages 106-107 for details

Optional Items: Backpack hook, casters, and glides



Double Desks

Traditionally Modern



1550 - T-Leg Double Desk



1650 - Activity-Leg Double Desk

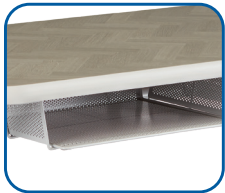


2759 - Fix. Ht Illustration V2 Double Desk



2750 - Adj. Ht Illustration V2 Double Desk

Features



Spacious Bookboxes



Adj. Frame Options
T-Leg, Illustration V2
or Activity-Leg



Fix. Frame Option
Illustration V2



Thick Desktop

High Pressure Laminate Edge Finish



T-Mold Standard



X-Strong Optional



PVC 3mm Optional

