



Traditionally Modern

T-Leg Series

TOP

Work Surface: 520 square inches

Desktop: Fiberboard $\frac{5}{8}$ " thick, 26" W \times 19 $\frac{1}{2}$ " D

Bookbox (WBB): Chrome plated steel bookbox for T-Leg Desks
18" W \times 16" D \times 5" H

FRAME

Color: Light Gray or Black frame finish

Stretcher Bar: 6 gauge powder coated rectangular tube,
1 $\frac{1}{8}$ " W \times 2 $\frac{1}{8}$ " D, heavy duty bolts with 1 gauge angle iron support

Upper Legs: 16 gauge powder coated rectangular tubing
1 $\frac{1}{8}$ " W \times 2 $\frac{1}{8}$ " D

Insert Legs: 16 gauge chrome plated rectangular tubing
1" W \times 2" D with three self locking screws

Height Adjustable: Legs adjust in 1" increments. 22-31" H
With a bookbox, the legs adjust from 22-25"

Without a bookbox, they can adjust from 22-32"

Glides: Screw-in style with nylon base; micro-adjustable

Optional Items: Casters, mesh bookbox, and rubber glides



**WOODSTONE
HARD PLASTIC**

See page 146



T-Leg Series – School Desk

Traditionally Modern

Matching Options



T-Leg Tables
See page 110-111



1500WBB - T-Leg Desk with Bookbox
(Shown in Gray Fabric laminate and Tangerine T-Mold)



1500 - T-Leg Desk



(Shown in Sky Rise laminate)

Features



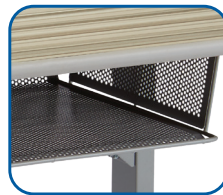
T-Leg with Three Screws



Adj. Legs
Compatible with Casters or Micro-Adj. Glides



Cross Bar



Optional Mesh Bookbox

High Pressure Laminate Edge Finish



T-Mold Standard



X-Strong Optional



PVC 3mm Optional

