



Collaborative

## Synergy

### TOP

**Work Surface:** 681 square inches

**Desktop:** 1 1/8" thick high pressure laminate

### FRAME

**Desk Supports:** Powder coated 3/4" square 18 gauge steel tubing

**Upper Legs\*:** Powder coated 2 1/8" round 18 gauge steel

**Insert Legs:** Chrome plated 2" round 16 gauge steel with two self locking screws

**Standing Height Legs Only:** Available in Black or Tungsten color

**Height Adjustable:** Legs adjust in 1" increments

**Casters/Glides:** Compatible with height adjustable glides (standard) or casters (optional)

**Optional Items:** Hard and soft casters, mesh bookbox, backpack hook



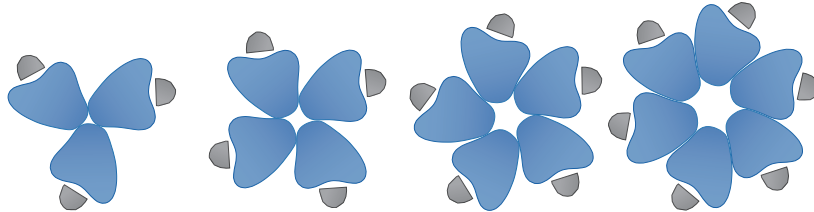
**Standard Ht.**  
5200 - Synergy Desk



**Standing Ht.**  
5200SH - Synergy Desk

### Space Saver

Synergy's multi-shaped options maximize collaborative workspace, while minimizing occupied classroom space.

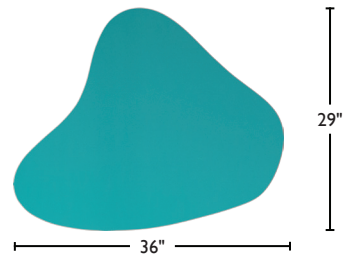


**Pod of 3**  
31 sq. ft of classroom space

**Pod of 4**  
35 sq. ft of classroom space

**Pod of 5**  
40 sq. ft of classroom space

**Pod of 6**  
44 sq. ft of classroom space



**Need help configuring in groups?**  
Request a complimentary puzzle set.

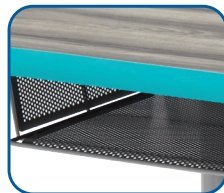
### Features



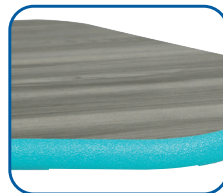
Heavy Duty Support Plate



**Adj. Legs**  
Compatible with Casters or Ht.Adj. Glides



Optional **Metal Bookbox**



Optional **X-Strong Edge (Aqua)**

### High Pressure Laminate Edge Finish



T-Mold *Standard*



X-Strong *Optional*



PVC 3mm *Optional*

