



Collaborative

## Junction

### TOP

**Work Surface:** 702 square inches

**Desktop:** 1 1/8" thick high pressure laminate

### FRAME

**Upper Legs:** Powder coated 2 1/8" round 18 gauge steel

**Insert Legs:** Chrome plated 2" round 16 gauge steel

**Height Adjustable:** Legs adjust in 1" increments

**Casters/Glides:** Compatible with height adjustable glides (standard) or casters (optional)

**Optional Items:** Hard and soft casters, mesh bookbox, backpack hook



# Junction – School Desk

Collaborative



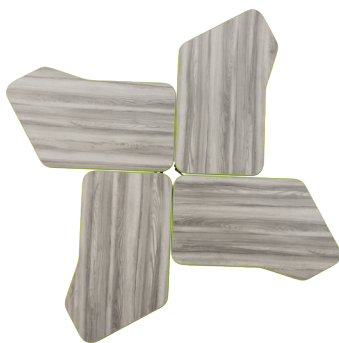
5300 - Right Handed Junction Desk



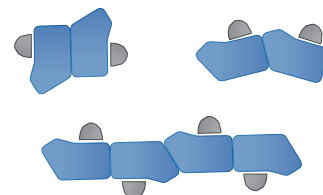
5300LH - Left Handed Junction Desk



**Pod of 3**  
23.7 sq. ft of classroom space



**Pod of 4**  
34.4 sq. ft of classroom space



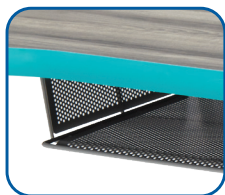
## Features



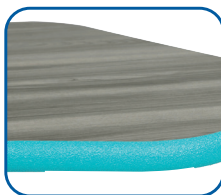
Heavy Duty Support Plate



Adj. Legs  
Compatible with Casters or Ht. Adj. Glides



Optional Metal Bookbox



Optional X-Strong Edge (Aqua)

## High Pressure Laminate Edge Finish



T-Mold Standard



X-Strong Optional



PVC 3mm Optional

