



Collaborative

S4 Stacking Series

TOP

Work Surface: 520 square inches

Desktop: Fiberboard 5/8" thick high pressure laminate 29"W x 20"D

FRAME

Utilized Frame: 1 1/2" steel round 17 gauge legs with 17 gauge upper frame

Bumpers: The desk's frame features 6 protective bumpers to avoid any scratches for safe stacking

Legs: Wheelbarrow style legs with height adjustable nylon glides

ADJ. HT. DESK

Insert Legs: 1 1/4" insert leg tube

Height Adjustable: 21-33" H

Casters: 2" locking casters

S4 Stacking Series – School Desk

Collaborative



Fix. Ht.
4429 - S4 Student Desk



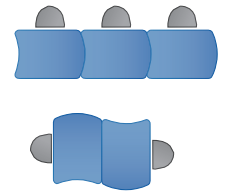
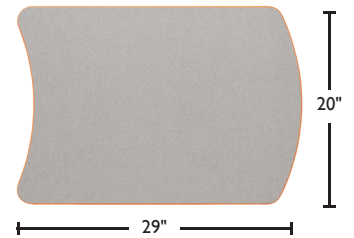
Adj. Ht.
4400A - S4 Student Desk*



4429 - S4 Student Desk Stacked



Pod of 4 PVC 3mm Edge*



*Shown in Driftwood Laminate and X-Strong Edge in Primary Blue

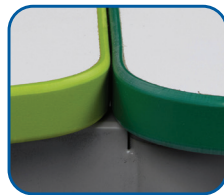
Features



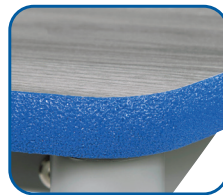
Fully Unitized Frame



Locking Casters



Optional
PVC 3mm Edge
(Lime Green & Primary Green)



Optional
X-Strong Edge
(Primary Blue)

High Pressure Laminate Edge Finish



T-Mold *Standard*



X-Strong *Optional*



PVC 3mm *Optional*

