



Classroom Table

C-Leg Series

TOP – COMPUTER TABLE

Tabletop: 1½" thick fiberboard high-pressure laminate surface

Grommets: Standard grommets for Computer Table

Grommets and wire management are standard on all C-Leg Tables

Depending on the width, one, two or three computer workstations can comfortably fit on each table. See the chart on page 149 for more information

FRAME

Frame: 17 gauge black powder coated rectangular tubing 1½" × 2½"

Wire Management: 18 gauge modesty panel with built-in wire management tray

Glides: Height adjustable screw-in nylon glides

Note: Casters add 2-3" to the overall height

Optional Items: Casters, connector bridge, keyboard tray, power supply and rubber glides



C-Leg Series – Computer Table



CL-2436 - Computer Table



CL-2448 - Computer Table
(Shown with optional Casters)

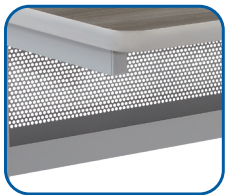


CL-2448 - Computer Table*
(Shown with optional Power Port)



*Shown in custom Nevamar #WM0047 Tabletop

Features



Built-In Wire Management & Modesty Panel



Optional Keyboard Tray



Grommet Holes



Optional Casters

High Pressure Laminate Edge Finish



T-Mold Standard



X-Strong Optional



PVC 3mm Optional