



*Durable tables with a high-pressure laminate top, adjustable powder-coated steel legs, chip-resistant edge banding, and five laminate options. Additional colors available for a customized look.*



**Standard Ht**  
AL-2448 - **Rectangular Activity Table**  
(Shown in standard laminate Driftwood)



**Standard Ht.**  
AL-4848CV - Clover Activity Table



**Standard Ht.**  
AL-48HR - Half Round Activity Table



**Standard Ht.**  
ALEE-6060FL - Flower Activity Table



**Toddler Ht.**  
ALS-2448TR - Trapezoid Activity Table  
(Shown in custom laminate Formica Gray Joseph Linen #6325)

## TOP

**Tabletop:** 1/8" Thick Fiberboard High Pressure Laminate Surface

## FRAME

**Stretcher Bar:** Underside For Extra Support. 60" Tables And Above

**Upper Legs:** 1 1/8" Outer-Diameter Powder-Coated 18-Gauge Steel with Underside Mounting Plate

**Insert Legs:** Chrome-Plated 1" Outer-Diameter 16-Gauge with Two Self-Locking Screws

**Height Adjustable:** Legs Adjust In 1" Increments

**Glides:** Self-leveling Nylon Glides

## HIGH PRESSURE LAMINATE EDGE FINISH



T-Mold  
Standard

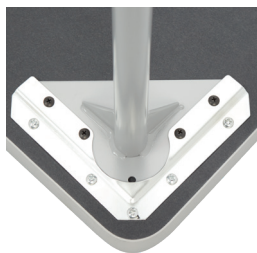


X-Strong  
Optional



PVC 3mm  
Optional

**Optional Items:** Bookboxes, Glide Caps (Felt, Rubber and Steel), Grommets, and Power Port.



Underside Mounting Plate



Underside View



Stretcher Bar



**Rectangular**  
Seats 2-10



**Round**  
Seats 4-8



**Trapezoid**  
Seats 4-5



**Kidney**  
Seats 5-6\*



**Horseshoe**  
Seats 6-8\*



**Square**  
Seats 4-8



**Clover**  
Seats 4



**Flower**  
Seats 6



**Squircle**  
Seats 4



**Half Round**  
Seats 1

Seat qty. varies depending on dimensions.

\*Plus 1 teacher seat