

Junction – School Desk



5300 - Junction Desk
(Shown in Driftwood Laminate and Aqua X-Strong Edge)

Designed for flexibility, this desk offers a book basket, height adjustability, and intuitive pod configurations. It's durable and space-efficient, perfect for individual or group use.



5300 - Right Handed
Junction Desk



5300LH - Left Handed
Junction Desk

TOP

Work Surface: 702 Sq. Inches

Desktop: 1 1/8" Thick High Pressure Laminate

FRAME

Upper Legs: Powder-Coated 2 1/8" Round 18-Gauge Steel

Insert Legs: Chrome-Plated 2" Round 16-Gauge Steel

Height Adjustable: Legs Adjust In 1" Increments

Casters/Glides: Compatible with Ht. Adj. Glides (Standard) or Casters (Optional)

HIGH PRESSURE LAMINATE EDGE FINISH



T-Mold
Standard



X-Strong
Optional

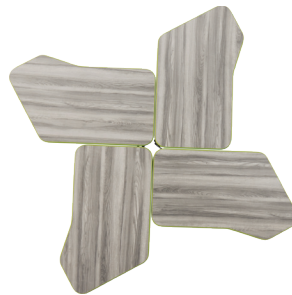


PVC 3mm
Optional

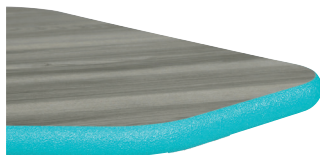
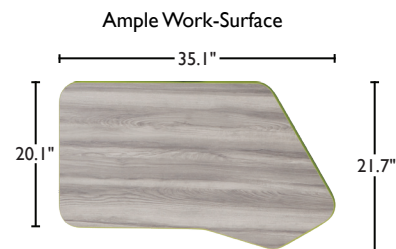
Optional Items: Hard and Soft Casters, Mesh Bookbox, Backpack Hook.



Pod of 3
23.7 sq. ft of
classroom space



Pod of 4
34.4 sq. ft of
classroom space



X-Strong Edge in Aqua



Adjustable Legs
Compatible with
Casters or Glides



Heavy Duty Support Plate