



REB20R - NEW Re•Group Rocker Chair



Re•Group offers unmatched versatility with customizable shapes, colors, and patterns. Crafted with durable wood, resilient foam, and French triple seams, it combines comfort, style, and long-lasting quality.





REB42 - **Bench with Back**
(With Flush Power Port)



RE86 - **Chaise Lounge**



RE42 - **Bench**



RE28-I-LAM - **Inside Corner**



RE24-LAM - **Ottoman**



REB20R - **NEW Re•Group Rocker Chair**
(Front View)



REB20R - **NEW Re•Group Rocker Chair**
(Back View with Built-in Handle Bar)



REB20R - **NEW Re•Group Rocker Chair**
(Side View)

SEATING

Seat and Back: Polyurethane foam surrounds a 3/4" plywood frame supported by multiple 1 x 2 wooden pegs.

Textiles: 6 different grade options

Glides: Adjustable 1" glide

Base: 3" powder-coated textured steel base.

Rocker Chair Base: Twin Rubber Glides

Ottoman & RE28-I-LAM

Tabletop: 3/4" laminate top

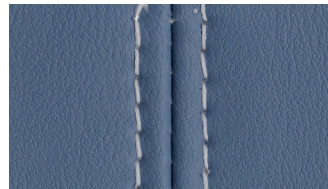
Edge Banding: Standard T-Mold edge banding with any standard color.

Glides: Adjustable 1" glide

Power: Various power port options available on Bench sides, or Power Shelf.



Laminate Ottoman with
Signature Welt Piping



French Stitching



Bench with Flush
Power Port



Solid Metal Base Frame



Underside Base and Glide
with Standard Ganging



Rocker Chair Twin
Rubber Glides Base



Scan to Watch Demo



MOMENTUM GROUP