

## Mobile Easel & Knapsack Rack



Mobile and sturdy, this rack features 12 rubber-top hooks, boot storage, and casters for easy movement, while the durable easel offers a wipe-off surface and secure portability.

7700 - Mobile Easel & 4670 - Mobile Knapsack Rack  
(Accessories shown not included)



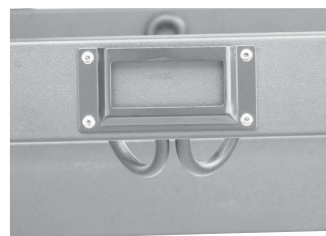
7700 - **Mobile Easel**  
(Accessories shown not included)



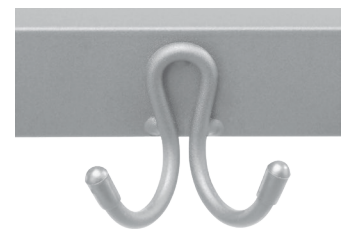
4670 - **Mobile Knapsack Rack**  
(Accessories shown not included)



**Mobile Easel**  
Storage Compartments, Unitized Frame  
& Locking Casters



**Mobile Knapsack Rack**  
Name Plate



**Mobile Knapsack Rack**  
Rubber Tip Double Hook

## MOBILE EASEL

**Dry-Erase Board:** Porcelain Magnetic Marker Board Encased In Metal Frame 30" x 30"

**Unitized Frame:** 1" Square Steel Tubing, Powder-Coated

**Tray Supports:** Steel Frame 23¼"W x 28"D

**Tray:** 4 - Rectangular Plastic Holding Removable Trays 9" x 12" x 3"

**Casters:** 4 - Standard 2" Heavy-Duty Locking Casters

## MOBILE KNAPSACK RACK

**Size:** 38"W x 41½"H x 24"D

**Hooks:** 6 rubber tip double hooks per side, 12 per unit. A name plate by each hook.

**Bottom Rack:** comes standard with bottom rack for boots. 16 gauge steel frame and 18 gauge steel crossbar.

**Finish:** Gray textured powder coated finish.

**Casters/Glides:** Standard with 4 Glides or Casters (2 that lock).