



Traditional tables with a modern perforated modesty panel for airflow and wire management. Available in various sizes with grommets, optional keyboard trays, and computer holders to support diverse classroom needs.

CL-2448 - **Computer Table**
(Shown in custom Nevamar #WM0047 Tabletop with optional Power Port)



CL-2448 - Computer Table
(Optional with Casters)



CL-2436 - Computer Table

TOP

Tabletop: 1½" Thick Fiberboard High-Pressure Laminate Surface

Grommets: Standard Grommets for Computer Table

Grommets and wire management are standard on all C-Leg tables.

Depending on the width, one, two or three computer workstations can comfortably fit on each table. See the chart on page 149 for more information.

FRAME

Frame: 17-Gauge Black Powder-Coated Rectangular Tubing 1½" × 2½"

Wire Management*: 18-Gauge Modesty Panel With Built-In Wire Management Tray

Glides: Height Adjustable Screw-In Nylon Glides

Note: Casters add 2-3" to the overall height.

HIGH PRESSURE LAMINATE EDGE FINISH



T-Mold
Standard



X-Strong
Optional



PVC 3mm
Optional

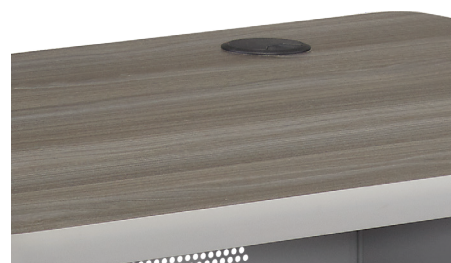
Optional Items: Casters, Connector Bridge, Keyboard Tray, Power Supply and Rubber Glides.



Built-In Wire Management
& Modesty Panel



Optional Keyboard Tray



Grommet Holes