

# Mobile Easel & Knapsack Rack



The Mobile Knapsack Rack comes with 12 rubber-top double hooks per unit; individual name plates.

Mobile, strong and convenient! Bottom rack for boots. 4 casters total; 2 locking casters.

The mobile easel's super strong frame and durable wipe-off board will last for years to come.

Four sure-locking casters take your easel anywhere, securely and easily.

## Mobile Easel & Knapsack Rack STYLES



7700 - Mobile Easel  
(Accessories shown not included)



4670 - Mobile Knapsack Rack  
(Accessories shown not included)

# Mobile Easel & Knapsack Rack



7700 - Mobile Easel & 4670 - Mobile Knapsack Rack  
(Accessories shown not included)

## MOBILE EASEL

**Dry-Erase Board:** Porcelain Magnetic Marker Board Encased In Metal Frame 30" x 30"

**Unitized Frame:** 1" Square Steel Tubing, Powder-Coated

**Tray Supports:** Steel Frame 23¼"W x 28"D

**Tray:** 4 - Rectangular Plastic Holding Removable Trays 9" x 12" x 3"

**Casters:** 4 - Standard 2" Heavy-Duty Locking Casters

## MOBILE KNAPSACK RACK

**Size:** 38"W x 41½"H x 24"D

**Hooks:** 6 rubber tip double hooks per side, 12 per unit. A name plate by each hook.

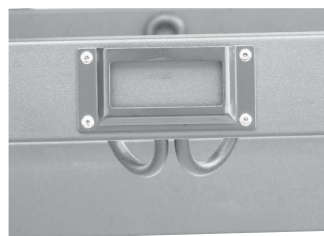
**Bottom Rack:** comes standard with bottom rack for boots. 16 gauge steel frame and 18 gauge steel crossbar.

**Finish:** Gray textured powder coated finish.

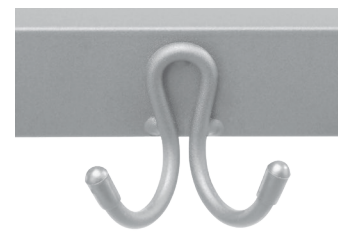
**Casters/Glides:** Standard with 4 Glides or Casters(2 that lock).



Mobile Easel  
Storage Compartments, Unitized Frame  
& Locking Casters



Mobile Knapsack Rack  
Name Plate



Mobile Knapsack Rack  
Rubber Tip Double Hook