

Activity Series – Group-Study and Activity Table



High-pressure laminate top and 1 1/8" - thick fiberboard core. Heavy-gauge steel legs; underside mounting brackets.

Powder-coated legs with chrome-plated inserts adjust in 1" increments; two self-locking screws for safety.

Standard black or gray edge banding, or choose from Educational Edge colors; 3/4" bullnose resists chipping.

Table surface available in your choice of five laminate options. Additional colors available upon request.

Activity STYLES



Standard Ht.
ALEE-4848CLV - Clover Activity Table



Toddler Ht.
ALS-2448TR - Trapezoid Activity Table



Rectangular
Seats 2-10



Round
Seats 4-8



Trapezoid
Seats 4-5



Kidney
Seats 5-6*



Horseshoe
Seats 6-8*



Square
Seats 4-8



Clover
Seats 4



Flower
Seats 6



Squircle
Seats 4



Half Round
Seats 1

Seat qty. varies depending on dimensions.

*Plus 1 teacher seat

Activity Series – Group-Study and Activity Table



Standard Ht
AL-2448 - **Rectangular Activity Table**
(Shown in standard laminate Driftwood)

TOP

Tabletop: 1/8" Thick Fiberboard High Pressure Laminate Surface

Edge Banding: Hydraulically inserted T mold edge banding. Educational Edge (EE)* Available.

FRAME

Stretcher Bar: Underside For Extra Support. 60" Tables And Above

Upper Legs: 1 1/8" Outer-Diameter Powder-Coated 18-Gauge Steel with Underside Mounting Plate

Insert Legs: Chrome-Plated 1" Outer-Diameter 16-Gauge with Two Self-Locking Screws

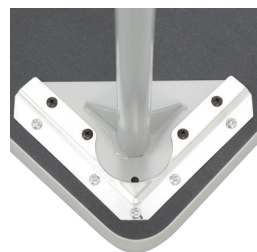
Height Adjustable: Legs Adjust In 1" Increments

Glides: Self-leveling Nylon Glides

*Educational Edge (EE): Color coordinated edge banding and legs.



Standard Ht
ALEE-6060FL - **Flower Activity Table**



Underside Mounting Plate



Underside View



Stretcher Bar

Optional Items: Bookboxes, Educational Edge (EE)*, Glide Caps (Felt, Rubber and Steel), Grommets, and Power Port.

Shown In: ALS-2448TR in custom laminate Formica Gray Joseph Linen #6325